

# 2025 Transylvania County

C O M P R E H E N S I V E P L A N

## PLANNING & COMMUNITY DEVELOPMENT

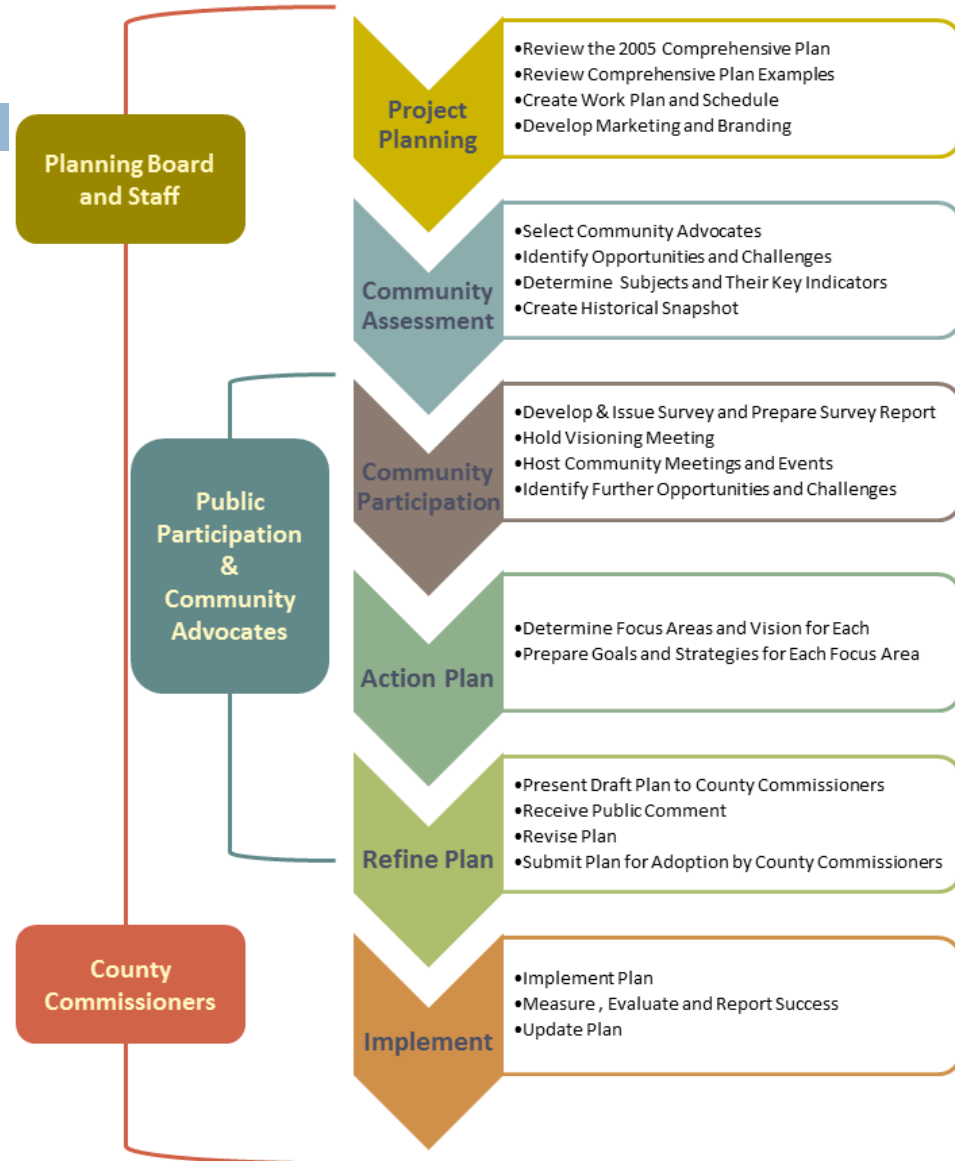
8/22/2016

Welcome

## Outline

- 2025 Comprehensive Plan - Background
- Draft Plan
- Next Steps
- Schedule
- Questions/Comments

### 2025 Comprehensive Plan Work Plan



# Public Participation



# 2025

## □ Community Advocates:

- Kick Off Meeting
- Survey Crafting Meeting
- Outreach Planning
- Goal Workshop

## □ Surveys: 2,113 Responses

### ▣ Distribution:

- Website,
- Video
- Door-to-door
- Meetings
- Paper
- Advertisements
- Tax Bill Inserts
- Festivals



8/22/2016

# Public Participation



# 2025

## □ Community Outreach

### ▣ Community Meetings:

- Williamson Creek
- Rosenwald
- Eastatoe
- See Off
- Sapphire-Whitewater
- Dunn's Rock
- Transylvania County Library
- Cedar Mountain
- Little River
- Quebec
- Rosman
- Balsam Grove
- Lake Toxaway
- North Transylvania Fire Rescue

## ▣ Special Events:

- Heart of Brevard
- White squirrel Festival
- TC Library
- Rise and Shine Parent's Meeting
- Fourth of July Festival
- Farmer's Market



8/22/2016

# Public Participation



# 2025

- Community Input:
  - ▣ Website,
  - ▣ E-mail
  - ▣ Planning Board Meetings
  - ▣ Paper



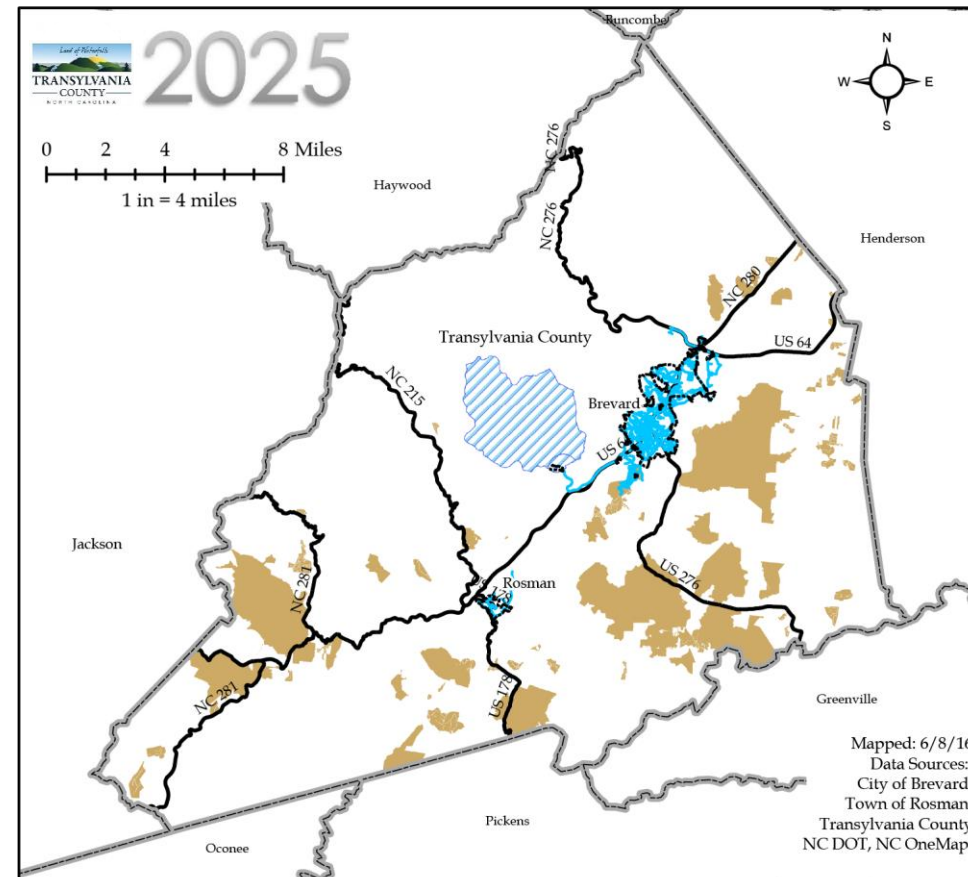
# Draft Plan



# 2025

## □ Areas of Study:

- Economics
- Infrastructure
- Transportation
- Community Facilities
- Environmental/Natural Resources/Agriculture
- Public Safety
- Advocacy/Cooperation
- Land Use
- Recreation
- Arts and Culture



### Legend

- |                        |                              |                         |
|------------------------|------------------------------|-------------------------|
| □ Municipal Boundaries | — Major Corridors            | — Municipal Water Lines |
| □ County Boundary      | ■ Subdivisions with Services | ▨ Brevard Water Supply  |

8/22/2016



- **Vision Statement:** Through leadership and community engagement, Transylvania County preserves the county's natural beauty and cultural resources while developing our built environment to improve the economic, social and cultural conditions of our county.

# Focus Areas with Goals:



# 2025

- **Economic Health Goal:** Transylvania County has a diverse and vibrant economic base that is business-friendly and is supported by exceptional infrastructure.
- **Environment Health Goal:** Transylvania County preserves, conserves, protects, enhances and utilizes its environmental and agricultural resources to provide access for outdoor experiences while increasing recreational and economic development opportunities.



# Focus Areas with Goals:



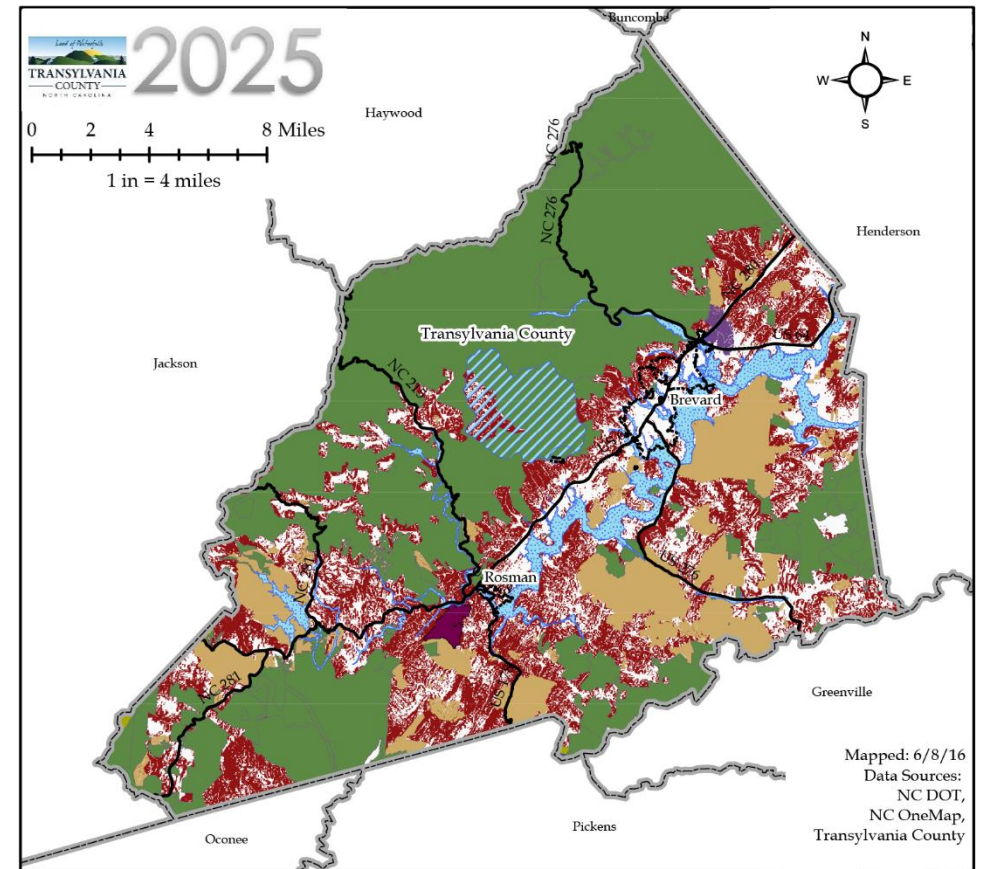
# 2025

- **Land Use and Livability Goal:** Transylvania County recognizes and supports private property rights while actively seeking ways to promote new growth and development through citizen driven policies and procedures that include, but are not limited to, safety, livability, extension of utilities, road improvements and community character.
- **Health, Culture and Equity Goal:** Transylvania County is an inclusive, healthy and well-rounded collection of communities and neighborhoods that all have access to the cultural, recreational, educational and service-oriented resources that support a high quality of life.

# Next Steps

## □ Planning Board:

- Make Any Necessary Changes
- Adopt Draft Plan
- Send Plan To County Commissioners



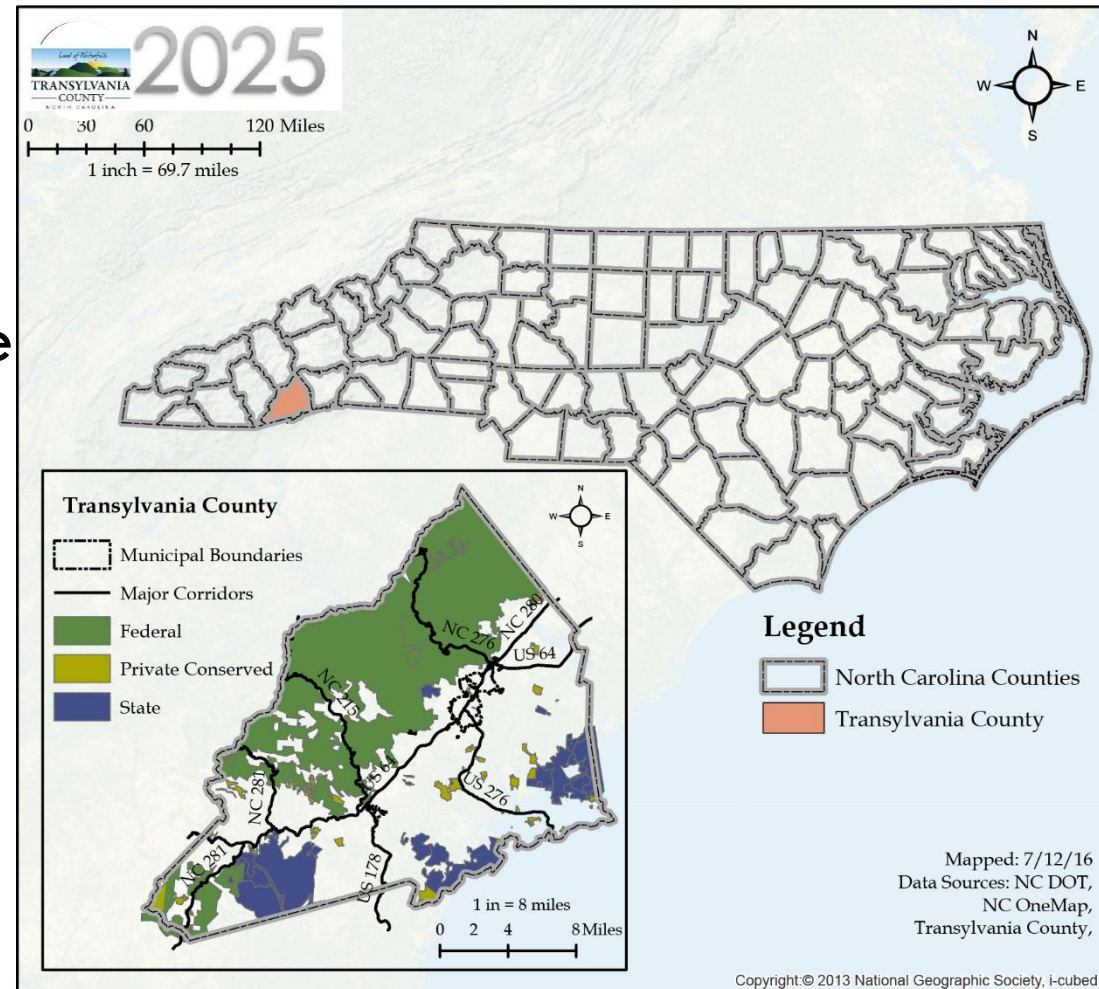
### Legend

County Boundary	Landfill	Subdivisions with Services	0 - 24.9% Slope
Municipal Boundaries	Floodplains	Drinking Water Supply	>25% Slope
Major Corridors	Conserved Lands	Pisgah Forest Zoning	

# Next Steps

## County Commissioners:

- Hear Public Input
- Make Any Necessary Changes
- Determine Responsible Groups for Implementation
- Adopt Plan



# Schedule



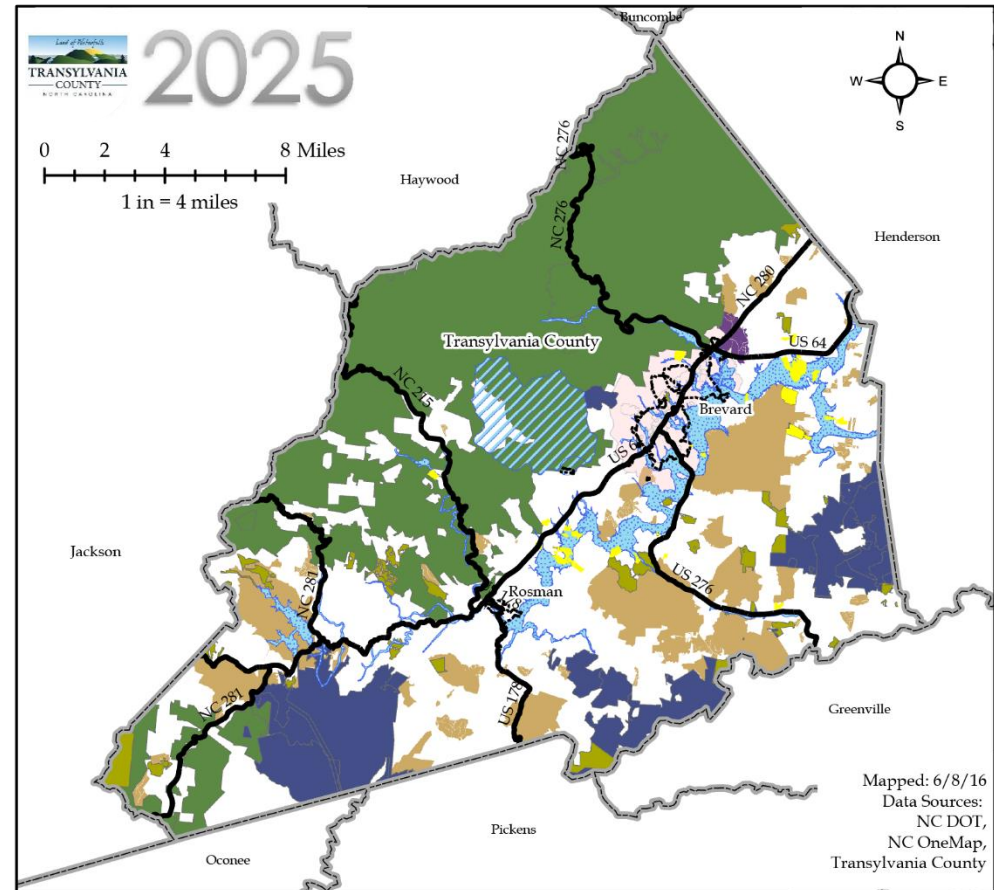
# 2025

## County Commissioners:

September 26th

## Implementation:

Timeline to be determined by responsible groups and/or County Commissioners



### Legend

County Boundary	Federal Land	Brevard Zoning
Municipal Boundaries	Private Conserved	Pisgah Forest Zoning
Major Corridors	State Land	Subdivisions
Floodplains	Voluntary Farmland District	Brevard Water Supply

# Questions/Comments



# 2025