



NORTH CAROLINA
Department of Transportation

STIP Project R-5799

(Pisgah Forest Intersection Improvements)

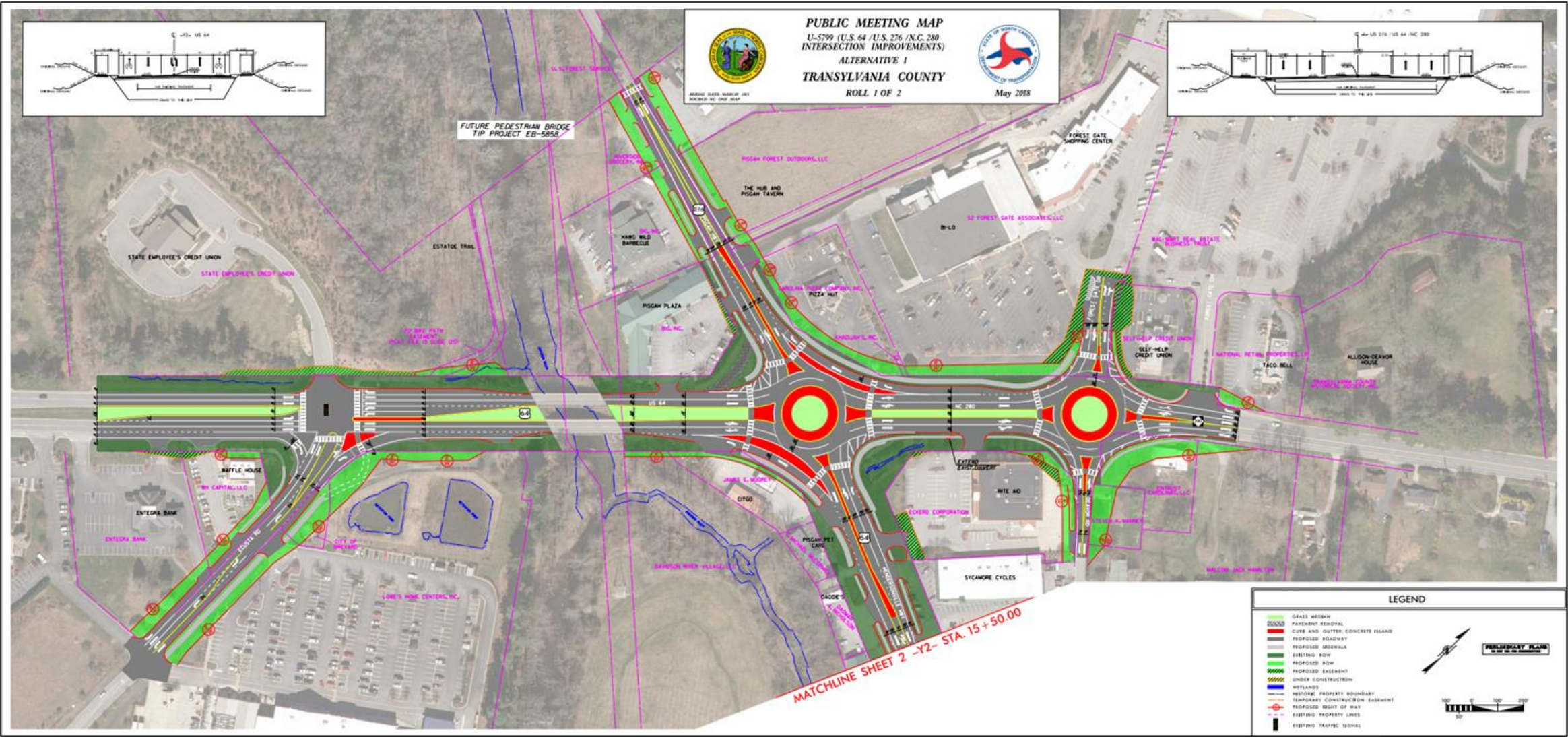
7/23/2024

Connecting people, products and places safely and efficiently with customer focus, accountability and environmental sensitivity to enhance the economy and vitality of North Carolina

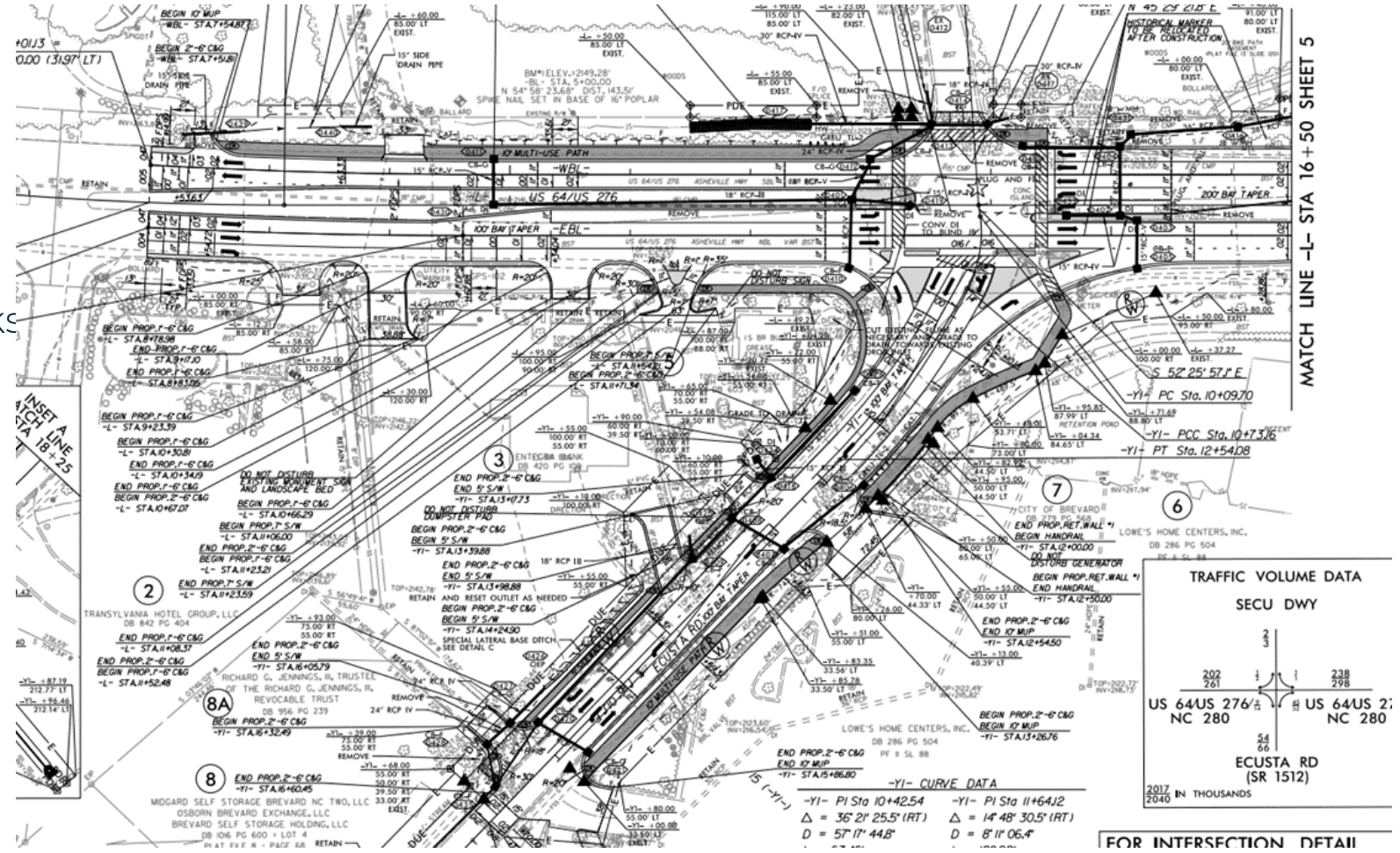
Project Information



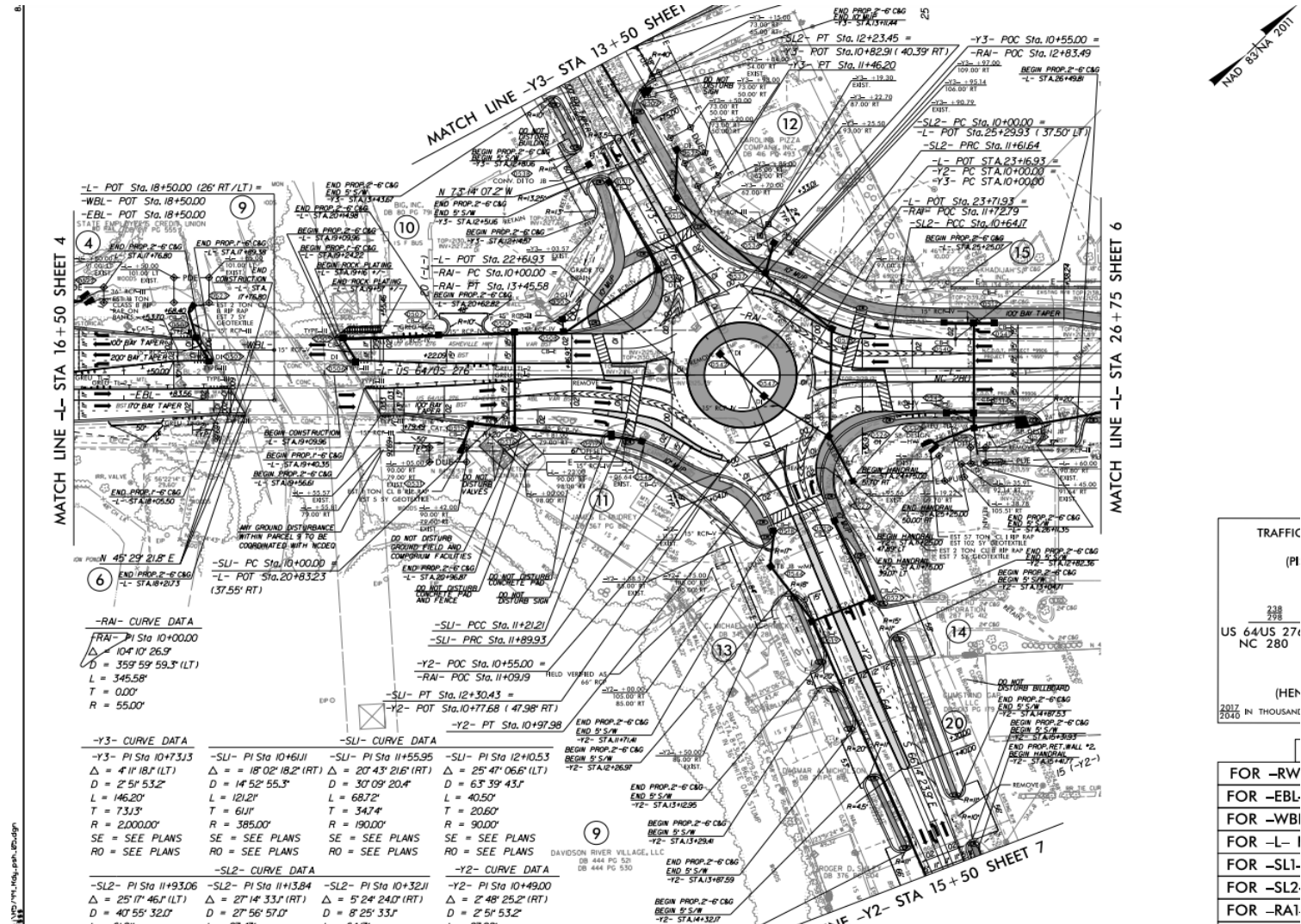
- Additionally, high levels of bicycle and pedestrian activity in the project area create a need for bicycle and pedestrian accommodations.



- 11'FT lanes with variable width concrete medians
- 10'Ft Multi-Use Path and 5'FT sidewalks
- Intersection stays signalized



- Dual-Lane roundabout
- 11'FT Lanes with variable width concrete medians
- 10'FT Multi-use path
- 5'FT sidewalks



- 3



-

Limits of the project



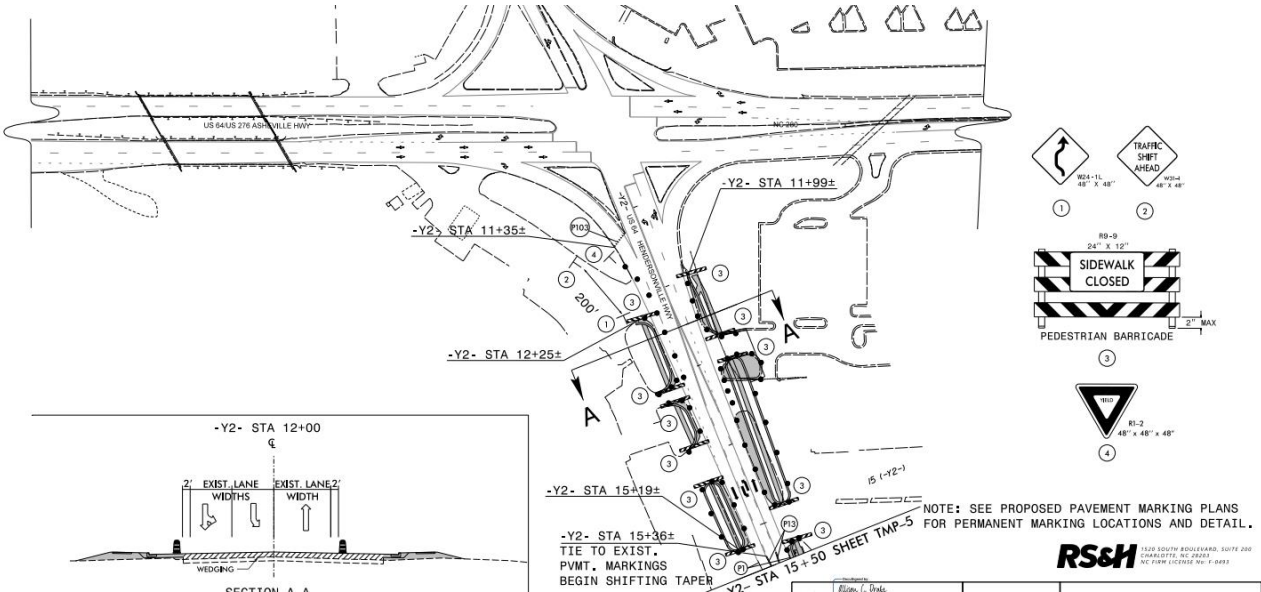
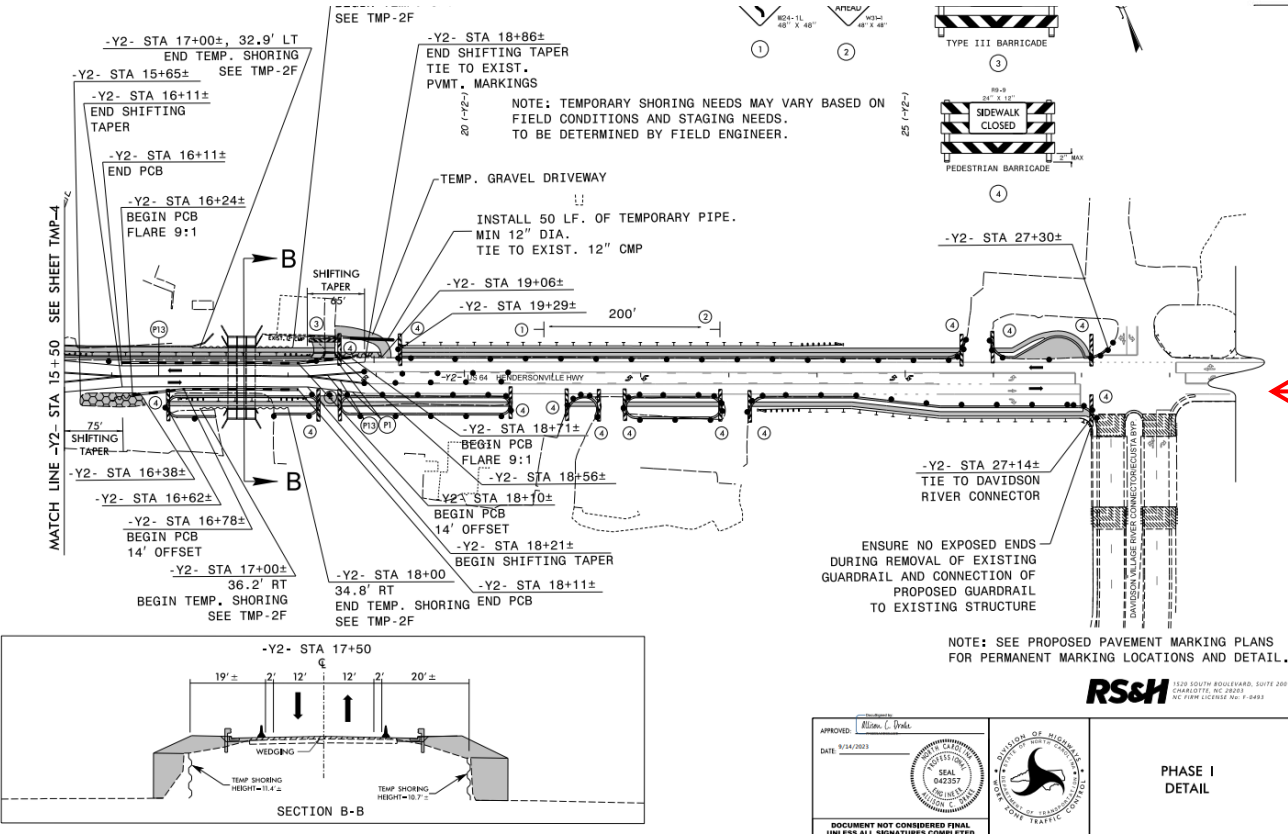
Construction

- **Let : November 23rd, 2023**
 - **Mountain Creek Contractors, Inc awarded project.**
 - **Contractor began work in January 2024**
 - **Work is anticipated to take three years to complete due to the phasing of the project.**
-



Phase I

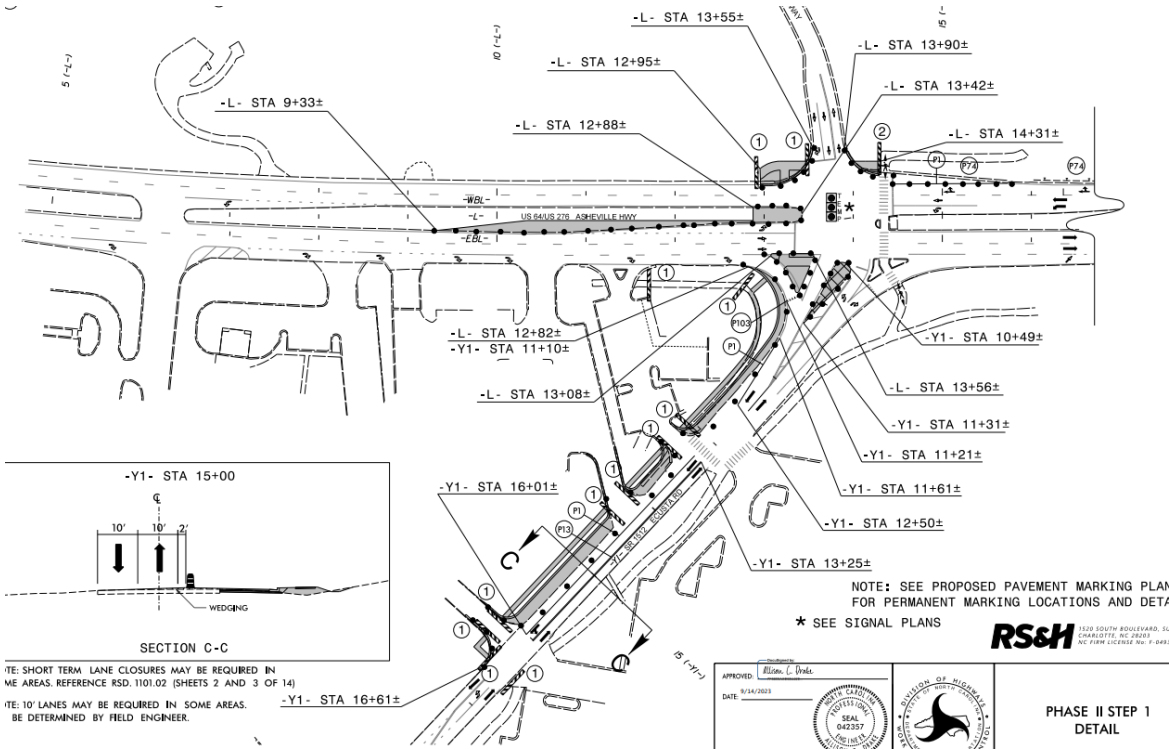
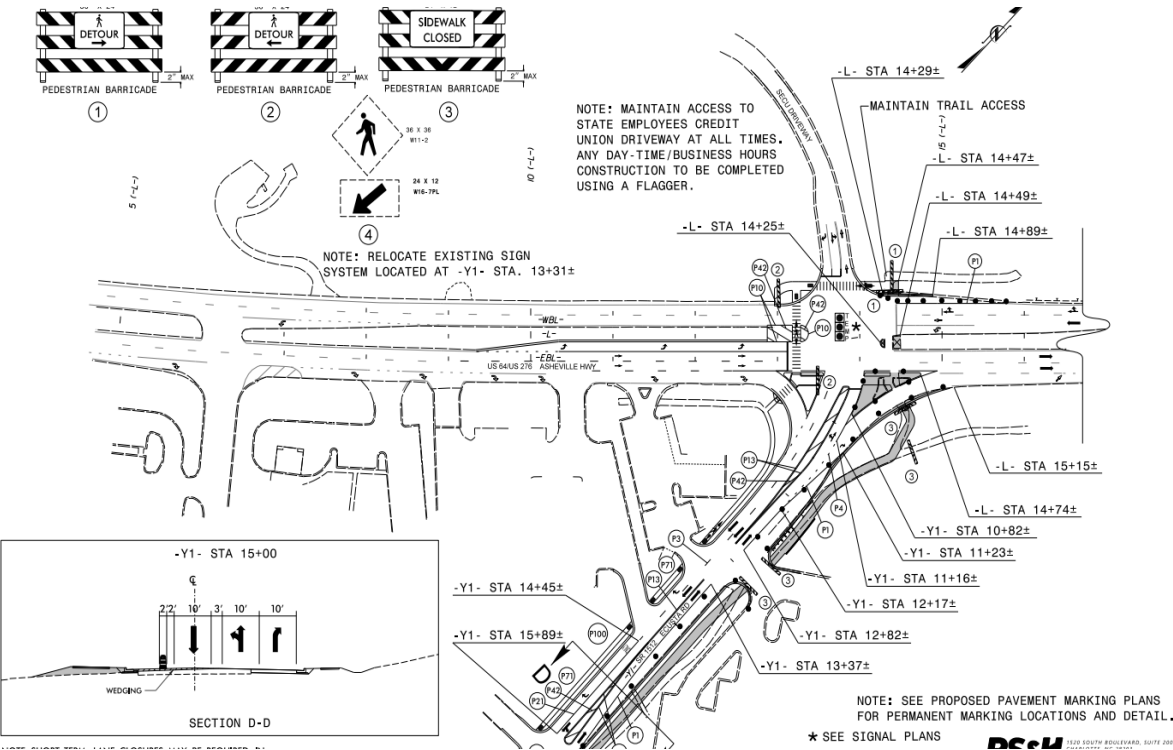
Construction down US 64 (Hendersonville Hwy)



Note: The work zone does not go past the Davidson River Connector Road

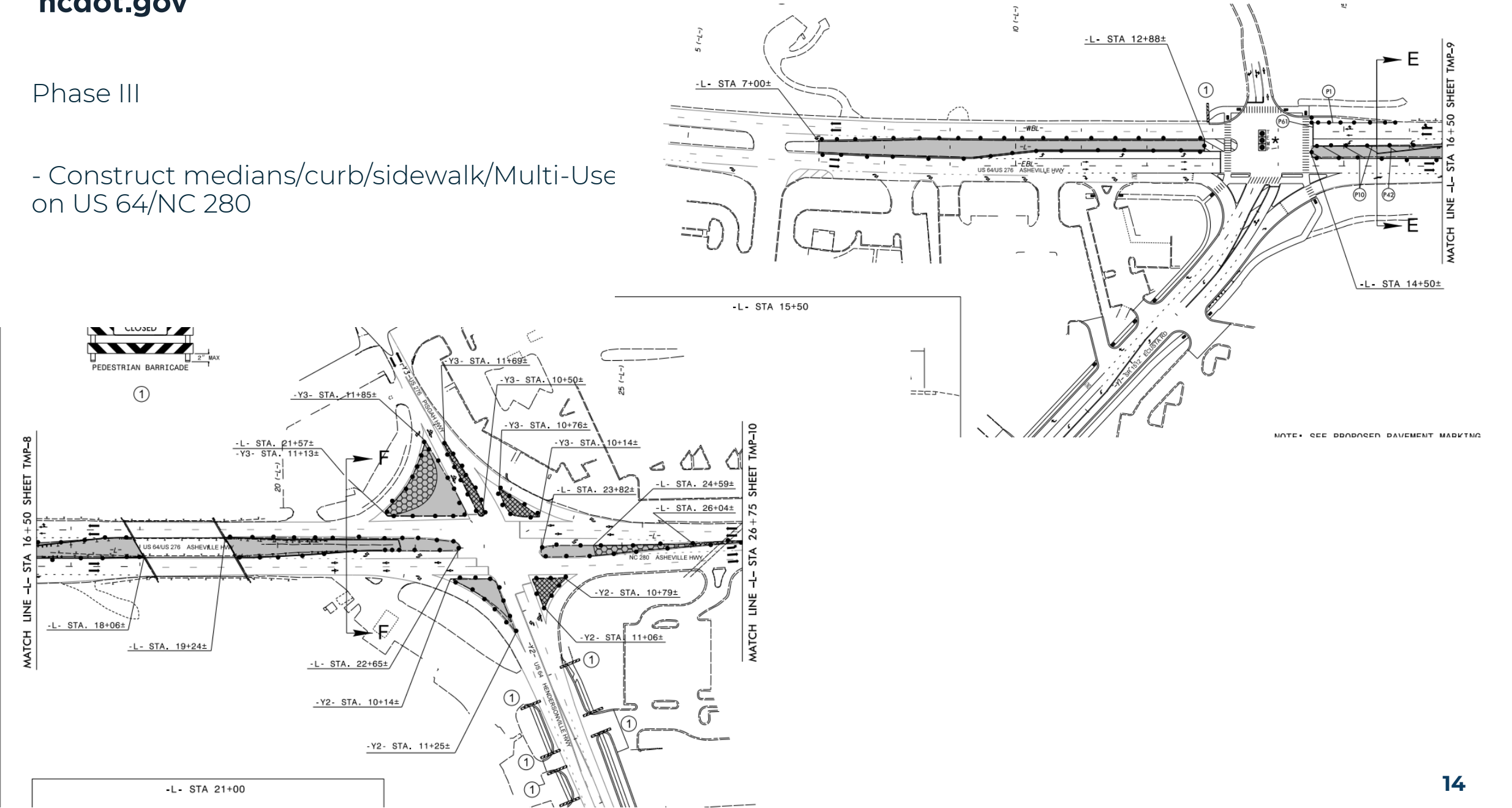
Phase II

Construction down Ecusta Road



Phase III

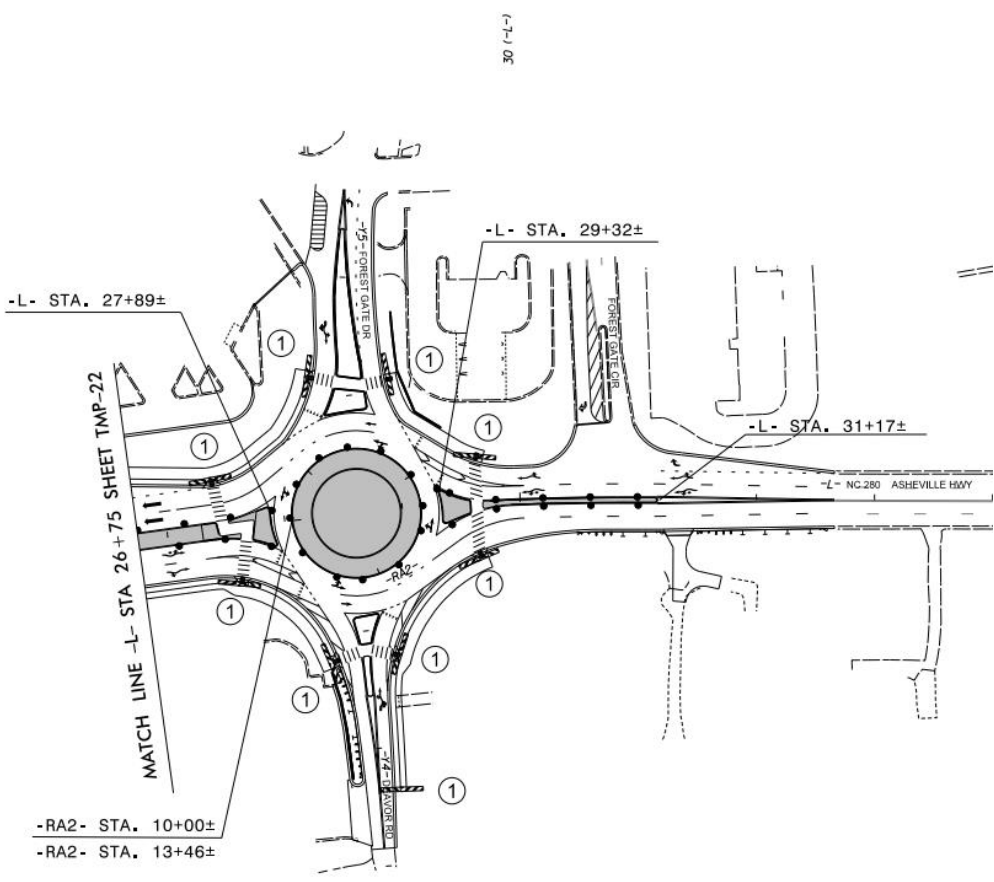
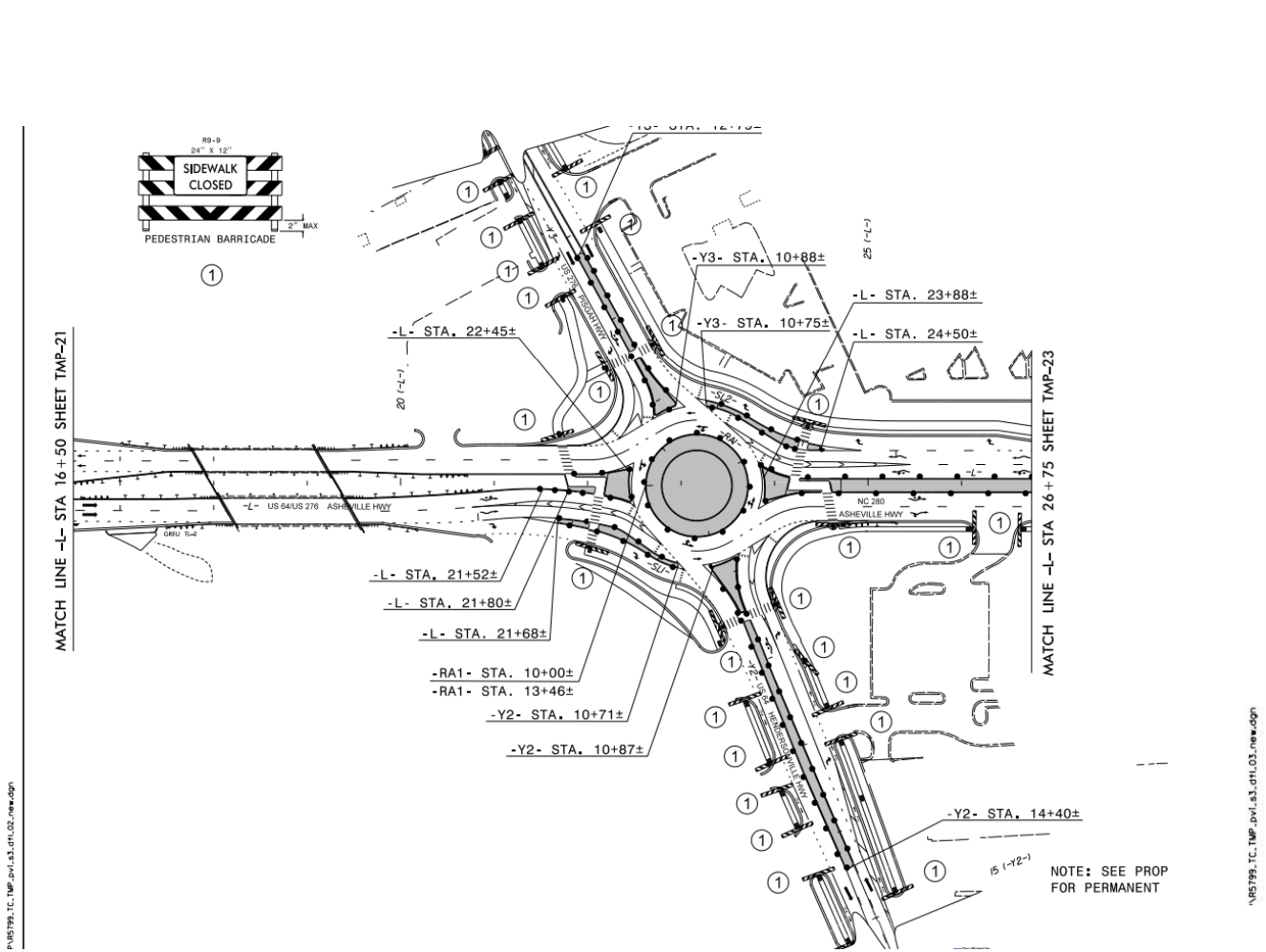
- Construct medians/curb/sidewalk/Multi-Use on US 64/NC 280



-
- The plan view shows the intersection of US 64/US 276 Asheville Hwy and Hendersonville Hwy. Key features include:
- Lane Closures:** Indicated by thick black bars across the road at various stations.
 - Stationing:** -L- STA 19+10±, -L- STA 17+77±, -L- STA 21+02±, -L- STA 21+84±, -L- STA 23+84±, -L- STA 24+84±, -L- STA 23+90±, -L- STA 25+68±, -L- STA 25+90±, -L- STA 24+46±, -L- STA 24+00±.
 - Match Lines:** MATCH LINE -Y3- STA 13+50 SHEET I-1 and MATCH LINE -J- STA 26+75 SHEET TMP-I6.
 - Construction Details:** 295' MERGING TAPER, WEDGING, TEMP PAVEMENT.
 - Signal Plans:** Referenced as ★ SEE SIGNAL PLANS.
- SECTION K-K**
- Cross-section diagram showing lane widths and construction details:
- Total width: 24'
 - Lane widths: 2'-2", 10', 10', 10', 10', 5'.
 - Labels: TEMP PAVEMENT, WEDGING.
- NOTE:** SHORT TERM LANE CLOSURES MAY BE REQUIRED IN SOME AREAS. REFERENCE RSD. 1101.02 (SHEET 3 OF 14)
- APPROVED:** [Signature]
DATE: 9/14/2023
- SEAL:** 042357
PROJECT: NC 280 ASHVILLE HWY
DIVISION: DIVISION OF TRANSPORTATION



Phase IV continued...





Easy as pie

Questions?

Contact Us

Troy Wilson, PLS
District Engineer
tswilson@ncdot.gov
828-891-7911

Tyler Rogers, PE
Resident Engineer
rtrogers1@ncdot.gov
828-497-7333

Barry Mosteller
Senior Project Manager
bdmosteller@ncdot.gov
828-586-2141

 [ncdot.gov](https://www.ncdot.gov)

 [@NCDOT](https://twitter.com/NCDOT)

 [ncdotcom](https://www.instagram.com/ncdotcom)

 [NCDOTcommunications](https://www.youtube.com/NCDOTcommunications)

 [ncdotcom](https://www.soundcloud.com/ncdotcom)

 [@NCDOT](https://www.facebook.com/NCDOT)

 [NCDOT](https://www.linkedin.com/company/ncdot)

 [NCDOTcommunications](https://discord.com/invite/ncdotcommunications)

 [View All Channels](#)

Thank you!
