

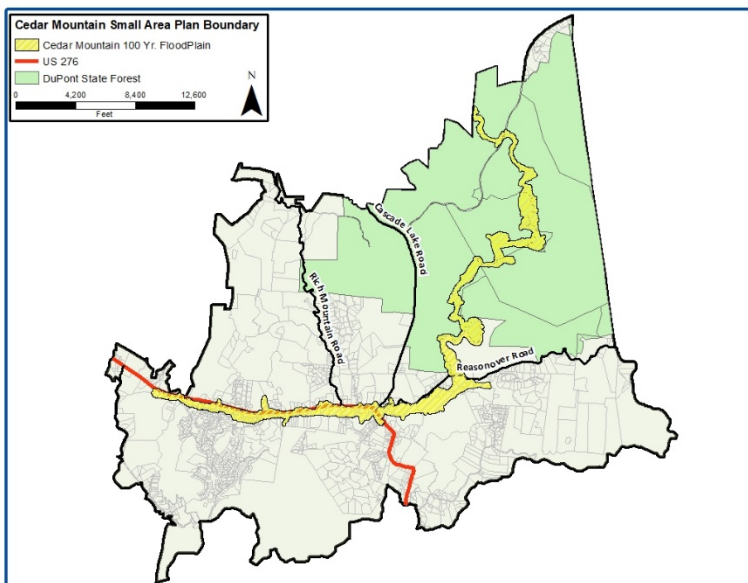
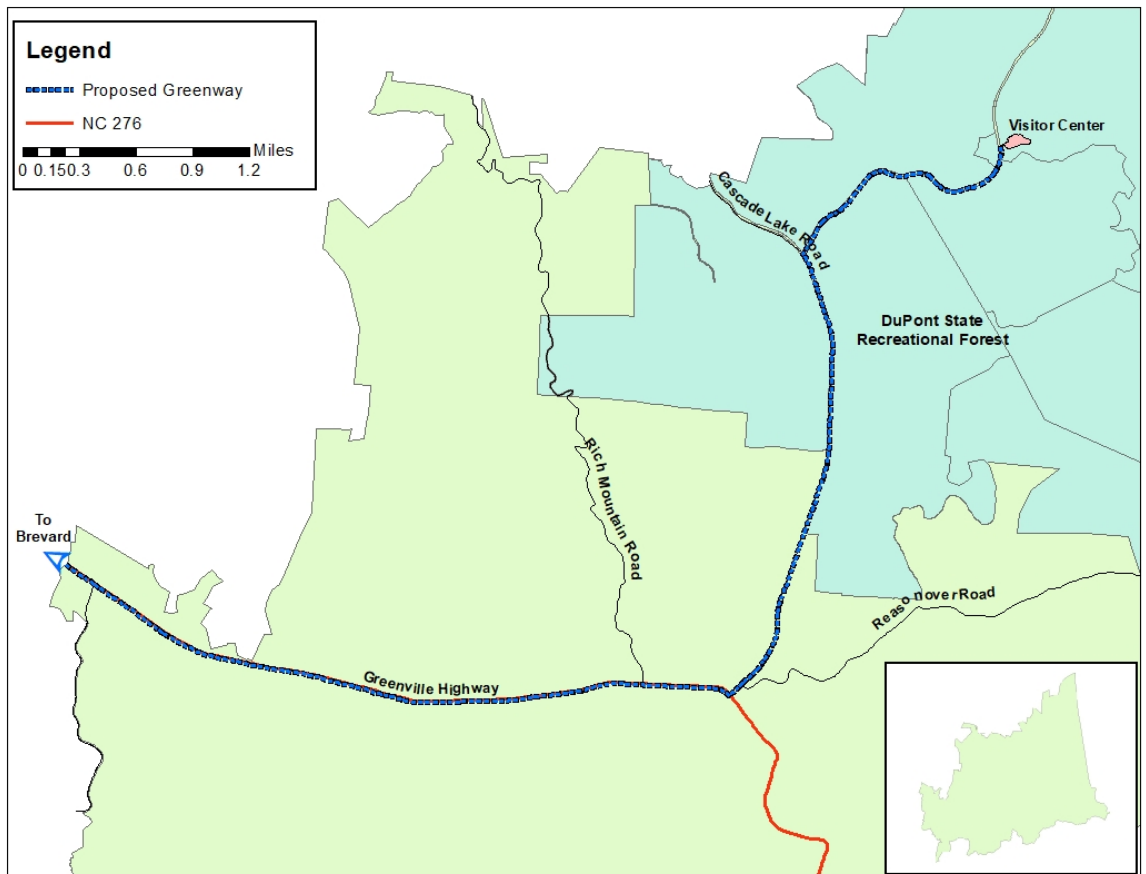
# Cedar Mountain Small Area Plan

## Common Topics

### Transportation

A common discussion topic in committee meetings is transportation along US 276. Concerns about speeding and limited bicycle accommodations popular among comments provided in the public input survey.

The small area plan committee has expressed the appeal of a public greenway that would connect the DuPont state forest with the rest of Cedar Mountain and extend to Brevard. Ideally the extension to Brevard would run parallel on the south side of US 276, as depicted in the concept map to the right.



Flooding in the Cedar Mountain area has been a common point of discussion by the small area plan committee. A 100-year flood plain runs through the center of the DuPont State forest and along US 276. Flood plain in the Cedar Mountain area take up more than 950 acres. Flood plain development is regulated across the county with the Flood Damage Prevention Ordinance.

### Other Common Plan Discussion Topics

- Retaining Cedar Mountain's rural character
- Protecting Little River and other natural resources in the Cedar Mountain area.
- Limited provisions for bicyclists and pedestrians to connect commercial, recreational, and residential uses in the area.
- Steep slopes and the lack of sewer and water capacity limiting future development.
- Potential for new development, residential and commercial, along US 276.
- Preservation of existing agricultural lands.
- Protecting historical properties.
- DuPont State Forest being a popular draw for tourism and an important public asset.
- Lack of employment opportunities in the Cedar Mountain area.
- Fast and efficient internet and cellular communication connectivity.