

HISTORIC DOWNTOWN *Brevard* Walking Tour Guide

HISTORIC DOWNTOWN *Brevard* Walking Tour Guide



BREVARD 1940S
CA. 1940S

BREVARD'S SESQUICENTENNIAL 1868 - 2018

In 2018, the City of Brevard celebrated 150 years of incorporation. There had been only two or three buildings within the original 50 acres for the town site when B.C. Lankford, L.S. Gash and Alexander England donated the land to start Brevard. By the time Brevard was officially incorporated in 1868, a few additional wood-frame stores and homes had been constructed.



BREVARD 1913

The buildings included in the Downtown Historic Walking Tour are representative of the time period from 1880 to 1940 and show how architectural preferences have changed within the community.



By 1930, the downtown district had expanded and the city population was 2,339. The area around the railroad depot was busy with small industries, including the Brevard Cotton Mill. Large homes were being built along West Probart, South Caldwell and East Main streets. Downtown Brevard had grown into a thriving commercial center.

At the turn of the century, Brevard was a bustling small town. The long dreamed of brick courthouse was finished. The railroad line from Hendersonville had been completed and was stretching west toward Lake Toxaway. Businesses were operating out of the first brick commercial building in the downtown district and a large hotel was being constructed across the street. The population was 584, a 78% increase from 1890.

HISTORIC DOWNTOWN



IN PARTNERSHIP WITH

The Downtown Historic Walking Tour is a partnership effort between the Transylvania County JHPC (Joint Historic Preservation Commission), the Heart of Brevard and the Transylvania County Library Foundation to highlight historic structures located in the Main Street National Historic District.

The JHPC is a Certified Local Government representing Transylvania County, the City of Brevard, and the Town of Rosman. The Commission is charged with preserving the cultural and architectural heritage of structures throughout the county. For more information contact Transylvania County Planning & Community Development at **828.884.3205** or **planning.transylvaniacounty.org**

The Heart of Brevard is a non-profit organization affiliated with the National Trust for Historic Preservation Main Street program whose purpose is to maintain a vital downtown. Revitalization is done through design, economic restructuring, promotion and organization. For more information contact the Heart of Brevard at **828.884.3278** or visit **Brevardnc.org**

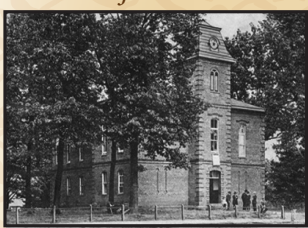
The Rowell Bosse North Carolina Room at the Transylvania County Library collects and preserves materials pertaining to Transylvania County families, businesses, organizations and history. For more information contact the Local History Librarian at **828.884.1820** or visit **library.transylvaniacounty.org**

Additional funding for this effort was made possible through a grant from the Transylvania Tourism (TDA). For more information call **828.884.8900** or visit **explorebrevard.com**



Historic Downtown Brevard

1 Transylvania County Courthouse Corner of East Main and North Broad



Completed in 1881, the courthouse is an Italianate-Victorian style, two-story T-plan brick building with a three-story tower. Still owned by Transylvania County, it continues to operate as the county courthouse.

As early as 1911, there was talk of a town clock in the tower. Money was raised by showing moving picture shows at the courthouse. Admission was 5¢ and 10¢. Little is known of this undertaking but the clocks were not installed until 1984.

2 McMinn Building Corner of West Main and North Broad



Built in 1899 and expanded in 1902 by C.C. Kilpatrick, the McMinn Building was the first brick commercial building in downtown Brevard.

In a letter dated March 20, 1898 Nathan McMinn wrote to his son, John, "I think I will put a good brick (building) on the corner this fall and save rent." The building retains much of its original interior features on the second floor largely due to the fact that McMinn family descendants still own the building to this day.

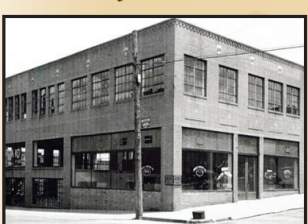
3 Plummer's Department Store 36 W. Main Street



This three-story brick building was constructed in 1911 by E.F. Moffitt for the McMinn, Shipman & Weilt Company to house businesses on the main level and offices above.

The back portion of the 2nd floor is a large auditorium that is two-stories in height. Entertainment consisting of "first class shows" or "first class moving pictures" was offered every night throughout the summer.

4 Rice Furniture Corner of West Main and Caldwell



Constructed in 1928 this two-story yellow brick commercial building was originally the Joines Motor Company. It was the home of Rice Furniture for 50 years from 1968-2018.

The herringbone patterned panel near the top of the front of the building features three cast medallions. There are six additional medallions on the Caldwell Street side of the building.

5 City Hall & Fire Department 114 W. Main Street



This two story yellow brick building with red brick accents was built in 1926 as the fire station for the town of Brevard with offices upstairs.

Previously, the Fire Department had been located beside the courthouse in the middle of what is now North Broad Street.

6 Co-Ed Theater 79 W. Main Street



The 1939 two-story brick theater has a stucco Art Moderne stepped facade and was designed by H.G. Stillwell of Six Associates. The theater had 499 seats, in-direct colored lights, air conditioning and the latest in projection and sound equipment.

From 1939-1959 Brevard had two theaters, side-by-side. The Clemson Theater operated from 1929-1956. The Clemson ticket booth was moved to the Co-Ed Cinema when the Clemson was demolished in the late 1990s.

7 Brevard Banking 73 W. Main Street



Built by R.P. Kilpatrick in 1924, the yellow Flemish bond brick building with limestone details was designed by H.G. Stillwell.

After Brevard Banking closed in 1930, the building continued to serve as a bank for Transylvania Trust, 1931-1957; First National Bank & Trust, 1957; First Union National Bank, 1958-2001; and Wachovia, 2001-2008.

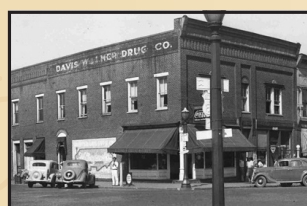
8 Patterson's Department Store 17 W. Main Street



The south side of West Main Street between Broad Street and the Times Arcade consists of four two-story brick commercial buildings. The second building, built in 1911, was the home of Patterson's Department Store beginning in 1940. At the business's peak in the mid-1970s they occupied about 7,500 square feet spread across both floors of the four buildings.

The two middle buildings were refaced with a plain brick front, giving a modern mid-to-late 20th century appearance around 1970. Today, the facades have the look of the 1940s.

9 Long's Drug Store/O.P. Taylor's 16 S. Broad Street



This circa 1900 two-story brick building has been extremely altered. Originally Davis-Walker Drug & Merchandise, it served as a drug store for much of its existence.

The brick was covered with stucco in the late 1930s and more recently with vinyl siding. The earliest exterior alteration was to change the entry to a clipped corner.

10 Pickelsimer Building 24 & 30 S. Broad Street



This two-story brick building was constructed by J.H. & Charles Pickelsimer in 1922 and retains many of its original features including inset brick panels and soldier course brickwork around the 2nd floor windows.

In the 1940s the Masonic Lodge Hall was located on the 2nd floor.

11 Fraternity Building 36-38-42 S. Broad Street



Designed by noted Asheville architect Richard Sharp Smith and built by John Maxwell, this two-story commercial building featured an elaborate brickwork facade. Nothing remains of the original exterior of the building.

The Brevard Post Office and Williams & Weilt Furniture were the 1st floor tenants when the building was completed in 1907. From 1925 through the 1940s, A&P Food was in two-thirds of the main level.

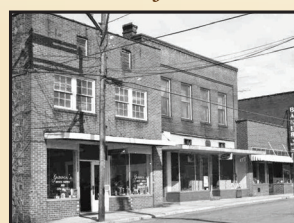
12 Walgreen's/Varner's Drug Store 50 S. Broad Street



This two-story brick building with two original storefront bays was built in the late 1920s and retains much of its original exterior including the 2nd floor windows.

Varner's Drug Store moved into the south side in 1942 and soon expanded with a soda shop in the other portion of the building. It operated until 1993.

13 West Jordan Street 22-36 W. Jordan Street



The earliest of these three buildings is the middle one. Constructed around 1920 it was the home of Phillip's Bakery. The building to the west was a later addition that wrapped the west and north sides of the original building.

The smaller one-story building was constructed in the late 1940s and was Baker's Jewelry for 30 years.

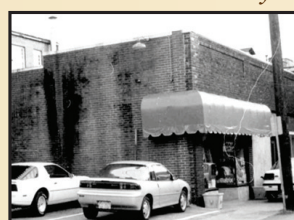
14 Lawrence Building 48 W. Jordan Street



Constructed to government specifications in 1926 by real estate developer Robert Lawrence, the east side of the building is two stories and the west side is one-story. Western Union and the Brevard Post Office occupied the 1st floor with offices and an apartment upstairs.

The Lawrence Building was the first home of Austin Photography Studio, located on the 2nd floor.

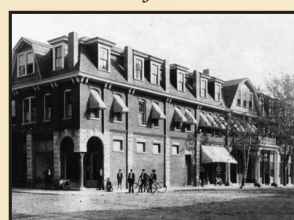
15 Times Arcade Building 33 Times Arcade Alley



The local newspaper office and print shop were located in the alley beginning around 1900. The alley was originally known as News Arcade and later changed to Times Arcade.

Early Transylvania newspapers were Sylvan Valley News (1895-1916) and Brevard News (1917-1932). For three months from October - December 1932, both Brevard News and The Transylvania Times were printed before The Transylvania Times bought out Brevard News.

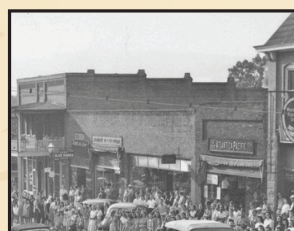
16 Aethelwold Hotel Corner of East Main and South Broad



The building was originally built in 1901 by R.P. Kilpatrick as a three-story hotel with retail space on the main level.

For over 40 years the old hotel had only two stories because the upper floor was removed for safety reasons in 1960. The third story was reconstructed and the original storefronts were restored in 2006.

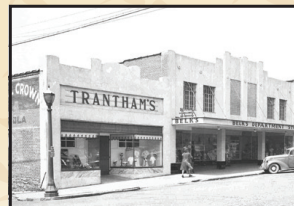
17 A&P Grocery/Crary Hotel 14-28 E. Main Street



The oldest building on this block is the two-story building on the east end that was constructed in 1911 as a hotel, with a 2nd story wooden porch across the entire front. The two one-story buildings between it and the Aethelwold Hotel were built between 1916-1924.

The building beside the Aethelwold, which retains many of its original features, was home of The Great Atlantic & Pacific Tea Co. (A&P) until the mid-1940s.

18 Belk's & Trantham's Department Stores 60-66 E. Main Street



Belk's Department Store was constructed in 1940 with an Art Deco facade. The one-story building has a high ceiling and originally had two separate mezzanine levels, one in the front and one in the back. The one-story building beside it was built around 1920 and was the home of Trantham's Department Store from 1939-1976.

Belk's Department Store moved out of downtown Brevard in 1993.

